

PERSONAL GPS TRACKER PARAMETER TOOL USER GUIDE



Version: V1.1

www.fifotrack.com

Revision History

Version	Author	Revision Date	Description of change
V1.1	Cici Wu	Dec 13, 2022	Initial revision

Contents

1 Parameter Tool Overview	4
2 Hardware and Software Requirements	4
3 Start to Use Parameter Tool.....	4
4 Functions	9
4.1 Main Menus.....	9
4.2 GPRS Menu Functions.....	10
4.3 Main parameter functions.....	11
4.4 Phone Call	12
4.5 Alarm Action	14
4.6 Fall Detection.....	15
4.7 System Info	17
5 Batch Settings	18
5.1 Export Setting	18
5.2 Import Setting.....	19
5.3 Save.....	20

1 Parameter Tool Overview

Personal GPS tracker parameter tool is a PC software for parameter configuration through COM port. With its friendly interface, users can read and configure parameters efficiently on PC.

2 Hardware and Software Requirements

- Windows XP (32&64bit) /Windows 7 (32&64bit)/Windows 8 (32&64bit)/Windows 10 (32&64bit)
- 1 Magnetic data cable
- Data cable driver
- Parameter tool software

3 Start to Use Parameter Tool

Visit <https://www.fifotrack.com/personal-gps-tracker-configure-tool> to download and Install data cable driver



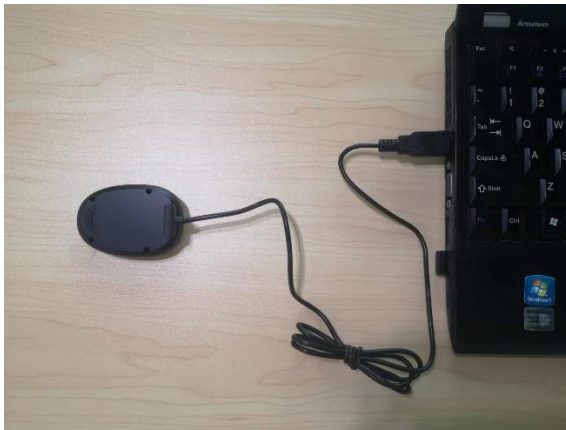
PL2303_Prolific_DriverInstaller_v1.11.0.exe

Refer to <USB CABLE DRIVER INSTALLATION GUIDE> for more details if need.

Visit <https://www.fifotrack.com/personal-gps-tracker-configure-tool> to download and run personal tracker parameter tool software.

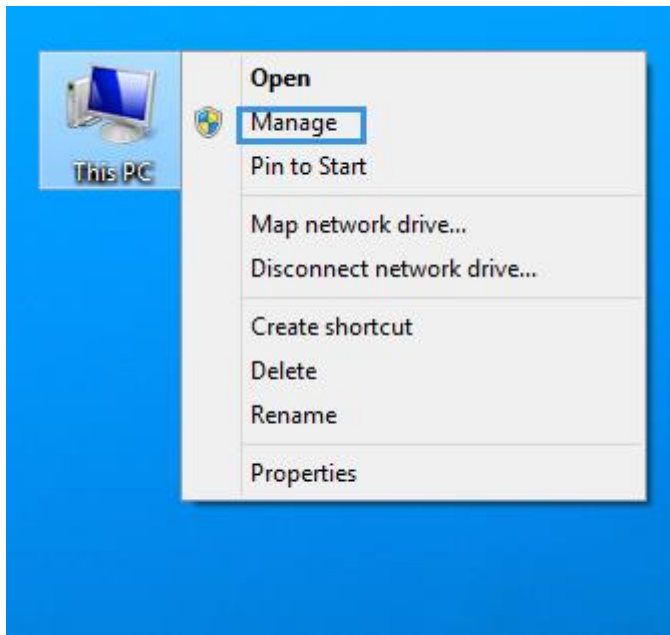


Connect device with PC via magnetic data cable, choose correct COM port and baud rate **9600**.

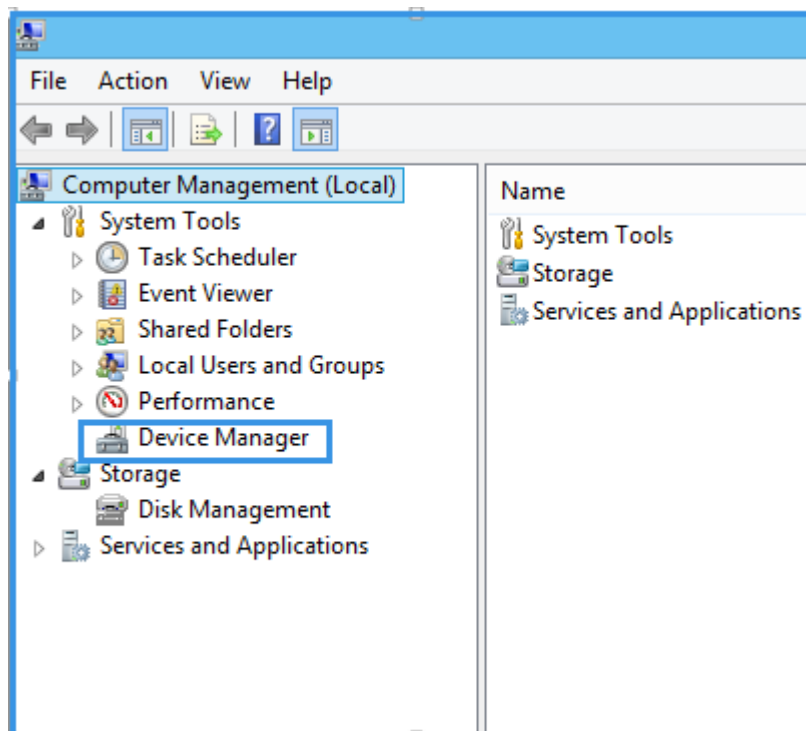


Follow up below steps to identify correct port.

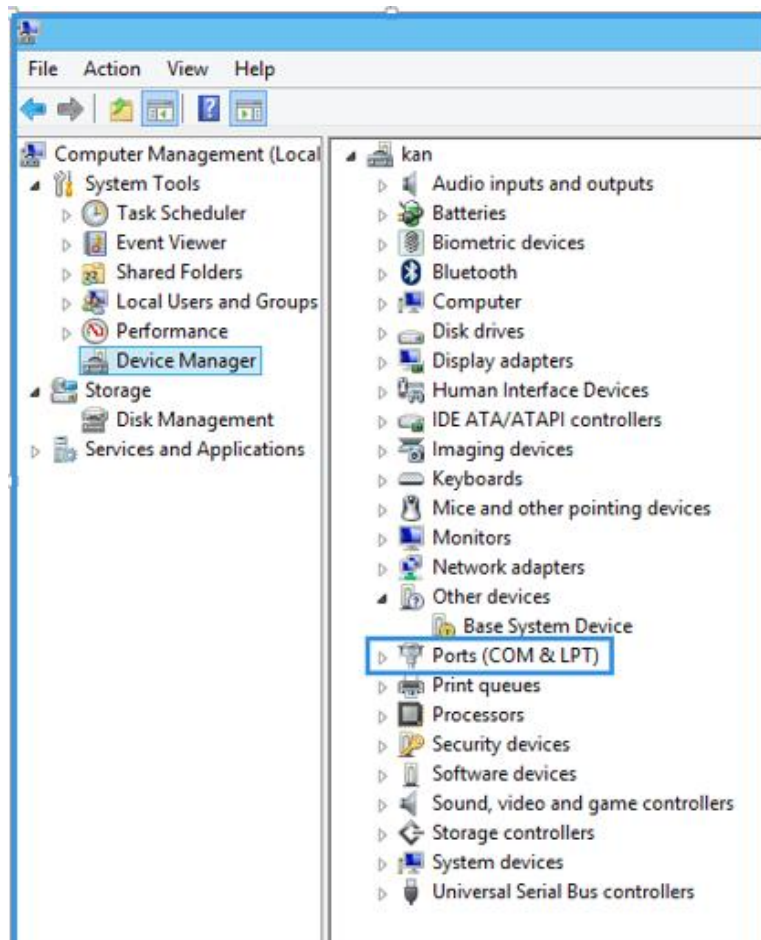
Right Click "This PC" menu, Click "Manage"



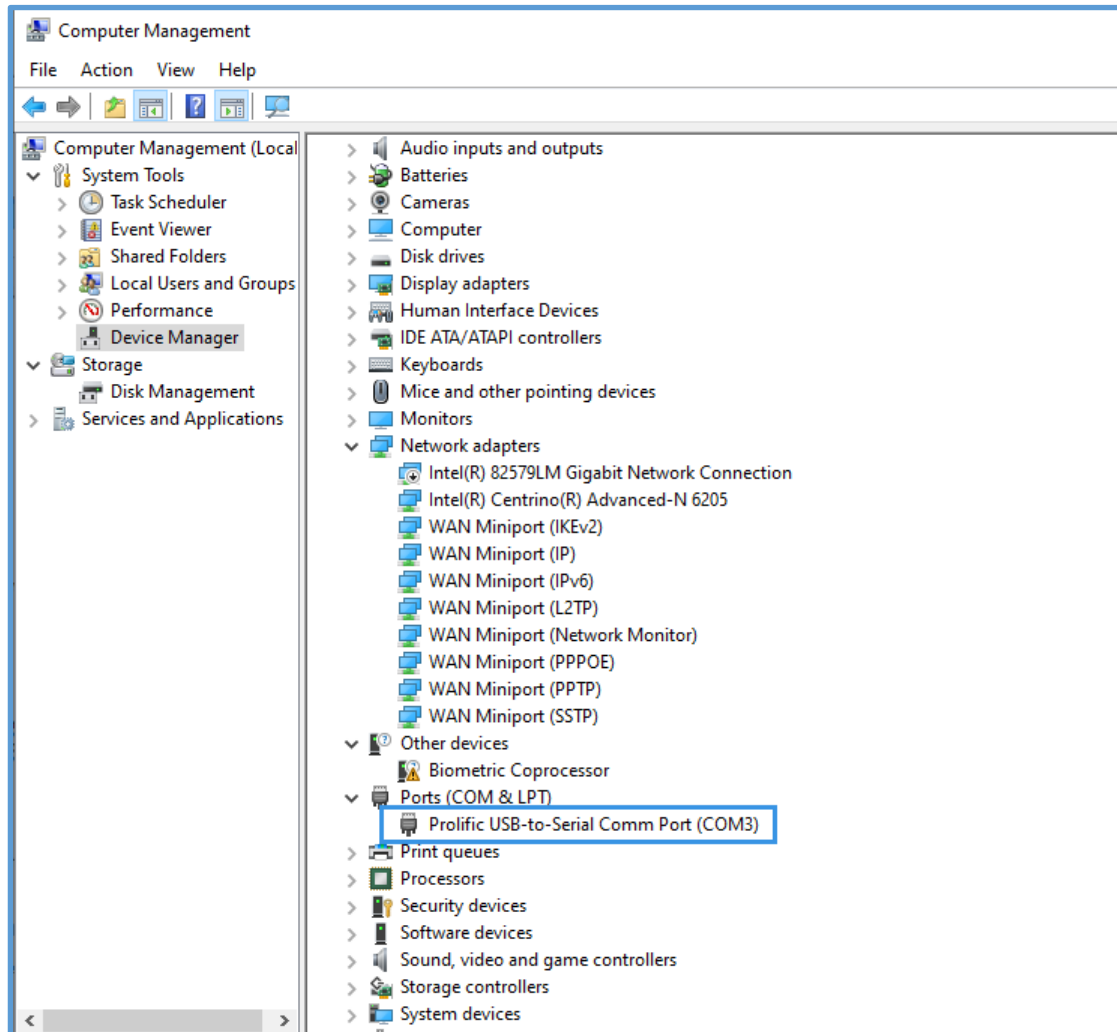
Double Click "Device Manager" icon



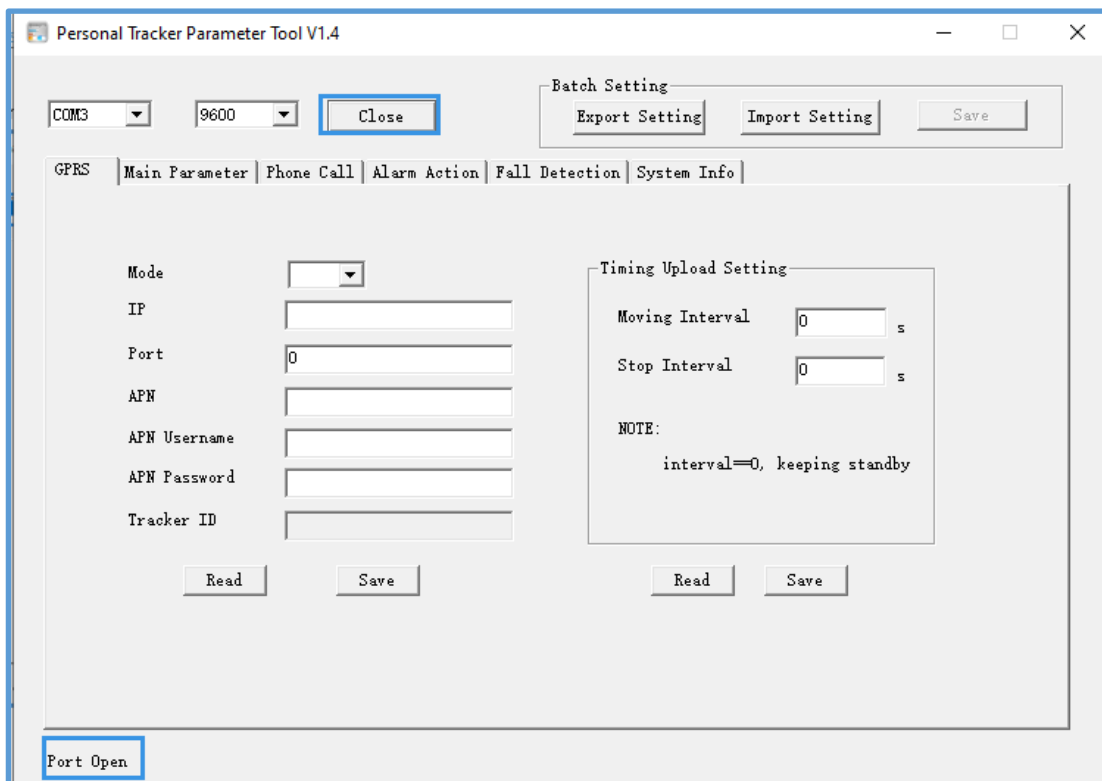
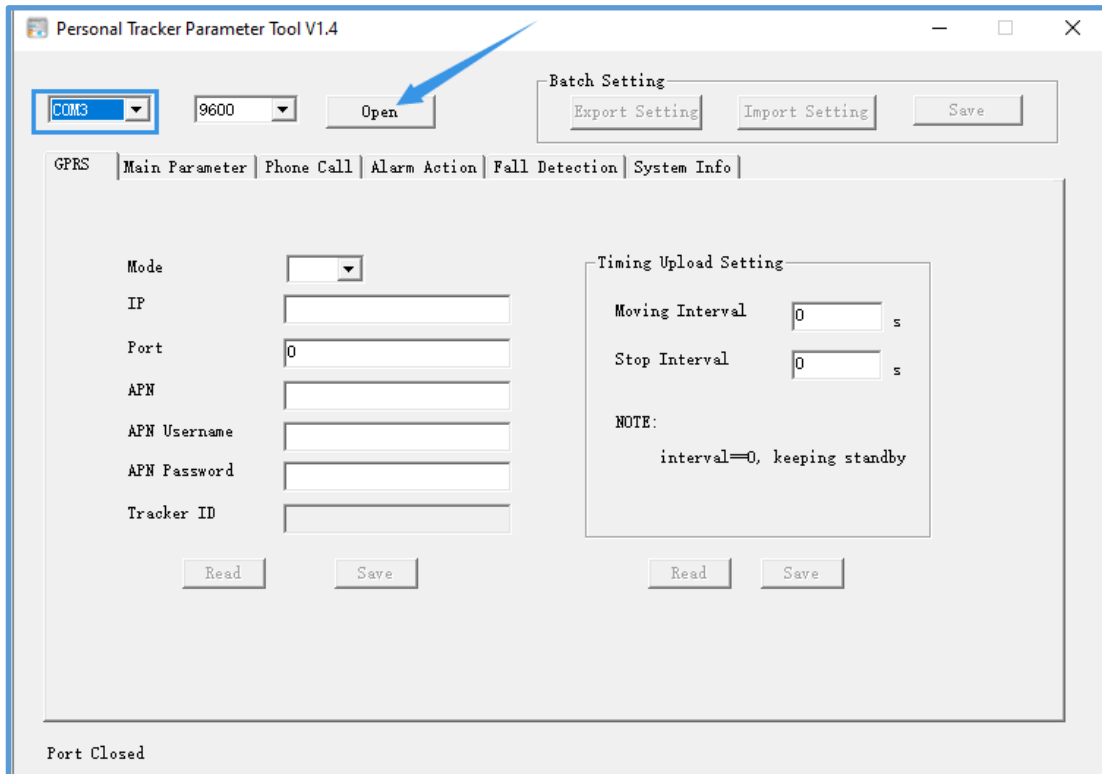
Click "Ports"



“COM3” is the correct port of parameter tool.

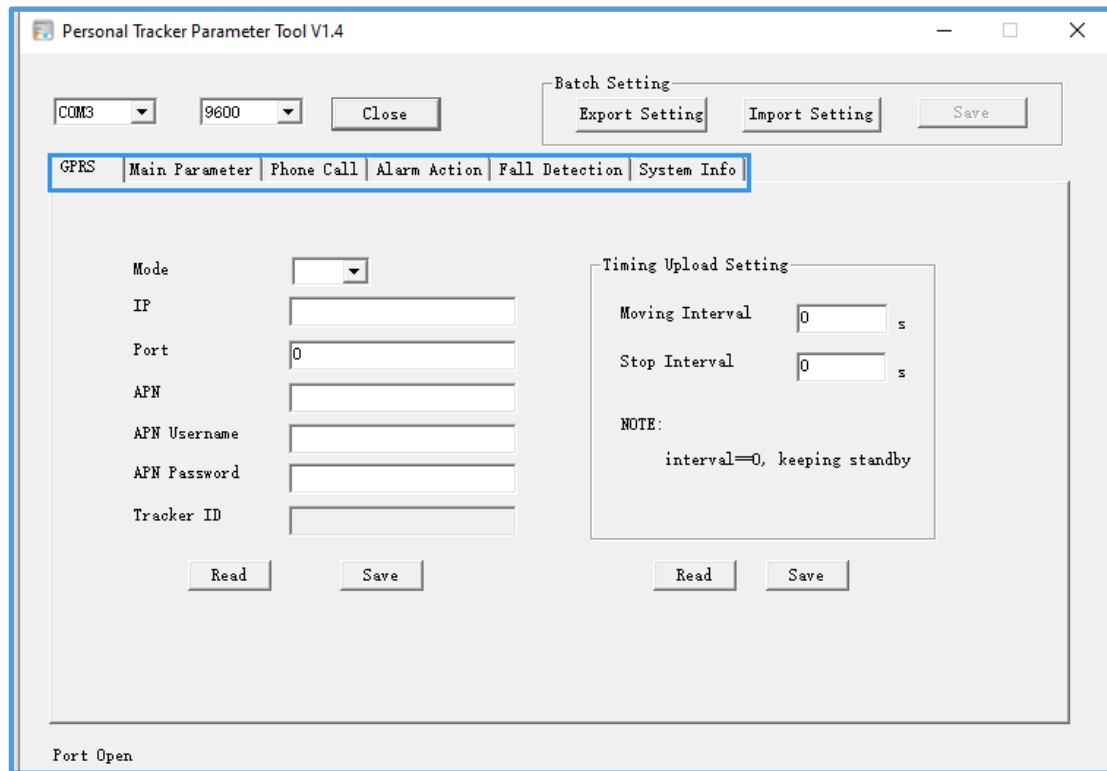


Run parameter tool, choose “COM3” port, “9600” baud rate, and click “Open” to open the port.



4 Functions

4.1 Main Menus



GPRS	Set GPRS parameters and time upload interval settings.
Main Parameter	Set main parameters like time zone, SMS password, GPS/WiFi order, button function and motion sensor sensitivity.
Phone Call	SOS number settings, two way calling volume settings, etc.
Alarm Action	Set alarm action such as SOS alarm actions
Fall Detection	Fall down alarm/Tilt alarm/No movement alarm settings
System Info	Retrieve device's basic information such as firmware version, IMEI, etc; Factory default option.

4.2 GPRS Menu Functions

GPRS	
Mode	TCP or UDP
IP	Server IP address or domain (Note: we provide two versions firmware. One is the standard, the other is for using Tuya APP. For Tuya APP firmware version, the IP and port are fixed, the user can just ignore it)
Port	Port of server
APN	Access Point Name, Google or contact local ISP for APN detail
APN Username	If no APN user name, leave it empty
APN Password	If no APN password, leave it empty
Tracker ID	Default is IMEI
Timing Upload Setting	
Moving Interval	Set up tracking time interval during the device's move state. Move/stop states detected by the device built-in motion sensor. For example: walking is a "move" state.
Stop Interval	Set up tracking time interval during the device's stop state.
Read and Save	
Read	Read current parameters
Save	Save the parameters. Please note there are two "read and save" in this module, one for the "GPRS", the other for the "time uploading setting"

4.3 Main parameter functions

SMS Timezone	Range [-12,12], default 0, UTC/GMT Standard. The time zone parameter affects the SMS message time and the “No movement alarm” time.
SMS Password	Default is 000000, 6 digital string. SMS commands must include the SMS password unless it is sent from the SOS numbers.
GPS/WiFi Order	<p>Mode 0: GPS only, use the GPS as the location data source always</p> <p>Mode 1: Searching GPS signal first. If can’t find GPS signal, switch to search WiFi signal instead.</p> <p>Mode 2: Searching WiFi signal first. If can’t find WiFi signal, switch to search GPS signal instead.</p>
Hang up by SOS Button	Enable to hang up call by short pressing SOS button
Disable Shut Down By PWR Button	Option to disable the power button to shut down device
Ring for Long-press SOS/CAL Button	Enable to ring reminder when press SOS button or CAL button

Motion Sensor Sensitivity	
Move/Stop Sensitivity	The motion sensor’s sensitivity to judge move/stop status. This affects B03 moving/stop interval and no movement alarm. Default is 10, range [0,100], smaller is higher sensitivity. Don’t suggest adjust it without special reason. This parameter is NOT associate with the fall down alarm.
Reset-on-Motion Sensitivity	This parameter affects both the fall down alarm and tilt alarm’s <rst-on-motion> field sensitivity. This parameter can adjust the movement sensitivity which for cancelling the fall down or tilt down alarm automatically during pre-alarm and alarm delay stages.

4.4 Phone Call

Call Reminder Type	The reminder ways for the incoming call from phone to device, 4 options below:
	No reminder: No ring or vibration for reminder
	Ring: ring for reminder only
	Vibration: Vibration for reminder only
	Ring+Vibration: Both ring and vibration reminder

SOS Dial Interval (Voicemail)	After SOS button pressed, the device will call the 3 SOS numbers in sequence for twice if no answers. To avoid the call enters into voicemail mode, the user can set up the waiting time between these SOS numbers.
-------------------------------	---

All Number Can Call in	Enable any phone numbers can call the device with two-way call mode. Otherwise, only the SOS numbers and favorite contact number are allowed to call the device.
Auto Answer Incoming Call	Enable the device to picks up the incoming call automatically after ringing once.

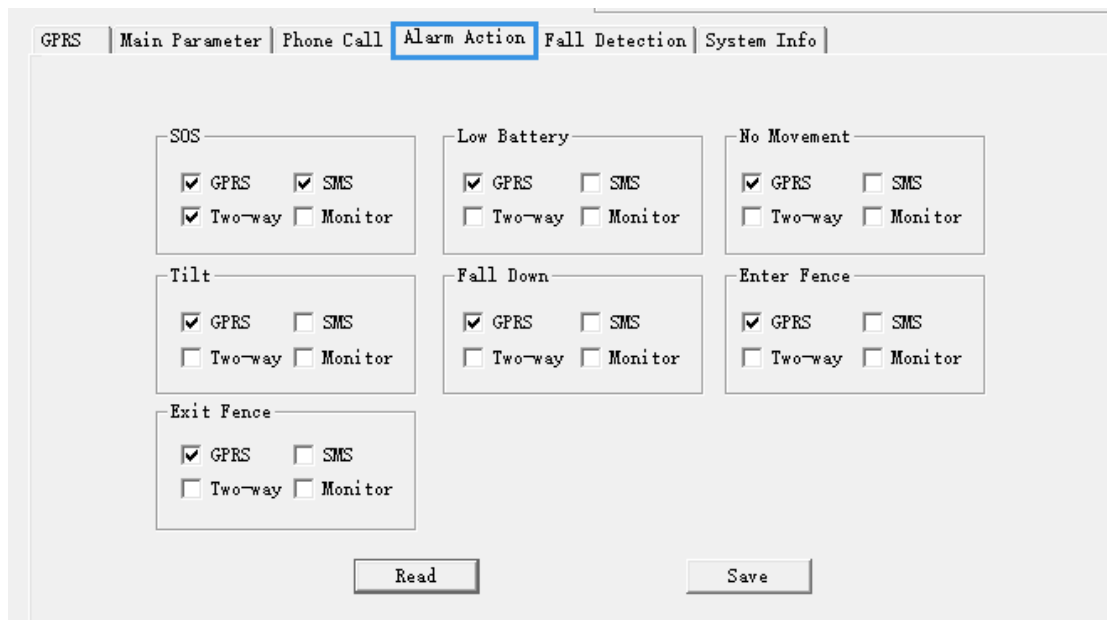
Self-define Volume	
Speaker	[0,100] range, should adjust over 17 greater than previous value, for example 17, 34....., higher is louder
Microphone	[0,100] range, should adjust over 17 greater than previous value, for example 17, 34....., higher is louder
Fixed use of Self-define volume	<p>The device default with only one volume mode A (Default) which is fixed volume (Speaker 40%, microphone 63%). We provide “Self-define Volume” field which allows the users to adjust volume, this is mode B (self-defined). After the “Self-define Volume” is enabled, the device has two volume modes both A and B. The users can switch between mode A and mode B by pressing the CAL button during conversation.</p> <p>If the “Fixed use of Self-define volume” option is selected, the device’s volume is fixed and always use the mode B (Self-define volume) only.</p>

Favorite Contact	After favorite contact number is set, long press (2 seconds) the CAL button, device will call this number directly.
------------------	---

SOS Number settings	<ol style="list-style-type: none"> Once the SOS numbers are set, only the SOS numbers and the favorite number can call the device. Other numbers will be rejected. (If enables “All Number Can Call in” option, then all numbers can call the device). If both the “Two-way Answer” and “Monitor Answer” are selected, only the “Monitor Answer” is valid.
SOS#1	Set up the first SOS number. The user can define the device’s response ways to the incoming phone call from the first SOS number below:
	Two-way answer: Two-way communication
	Monitor answer: Listen-in mode. Device will automatically pick up the call from 1st SOS number silently. The caller can hear the tracker, the tracker can’t hear the caller.
	Position SMS: The device will send the SMS message with location information to the first SOS number phone after the call.
SOS#2	Set up the second SOS number. The user can define the device’s response ways to the incoming phone call from the second SOS number below:
	Two-way answer: Two-way communication
	Monitor answer: Listen-in mode. Device will automatically pick up the call from second SOS number silently. The caller can hear the tracker, the tracker can’t hear the caller.
	Position SMS: The device will send the SMS message with location

	information to the second SOS number phone after the call.
SOS#3	Set up the third SOS number. The user can define the device's response ways to the incoming phone call from the third SOS number below:
	Two-way answer: Two-way communication
	Monitor answer: Listen-in mode. Device will automatically pick up the call from third SOS number silently. The caller can hear the tracker, the tracker can't hear the caller.
	Position SMS: The device will send the SMS message with location information to the third SOS number phone after the call.

4.5 Alarm Action



Alarm Action	<ol style="list-style-type: none"> The alarm action defines how the device notifies the user after the alarm is triggered. Below are the options. If both the "Two-way" and "Monitor" are selected, only the "Monitor" is valid.
GPRS	Send one alarm GPRS data package to the server platform or APP
SMS	Send SMS message to the preset SOS numbers. Each SOS number will receive one SMS message.
Two-way	Device will call the SOS number with two-way call mode.
Monitor	Device will call the SOS number with Listen-in mode, device without ring reminder when dial out. The phone can hear the voice from the device side, the device side can't hear the voice from the phone.
Alarm List	

SOS	SOS alarm, trigger the alarm by press the SOS button for 2 seconds
Low battery	Low battery alarm, when the built-in battery \leq 13%, automatically generated
No movement	No movement alarm, configure this alarm in the parameter tool “Fall Detection” Menu.
Tilt	Tilt alarm, configure this alarm in the parameter tool “Fall Detection” Menu.
Fall Down	Fall down alarm, configure this alarm in the parameter tool “Fall Detection” Menu.
Enter Fence	Enter Geo-fence alarm, configure this alarm by command B19
Exit Fence	Exit Geo-fence alarm, configure this alarm by command B19

4.6 Fall Detection

Fall Down Settings	
Enable	Enable/Disable the Fall down detection
Reset-on-Motion	Enable to cancel the Fall down alarm automatically by movement during “pre-alarm” and “Alarm delay” stages.
Pre-alarm	Configure duration time as pre-alarm stage before generating a fall down alarm in the device, unit is second, range [0,1000]. During this pre-alarm stage, the device will ring for reminder that a fall down alarm is going to generate, the user can short press the SOS button to cancel the fall down alarm. If the user enabled the “Reset-on-Motion” option, shake the device or keep moving also can cancel the fall down alarm.
Alarm Delay	Configure duration time as Alarm Delay stage before sending a fall

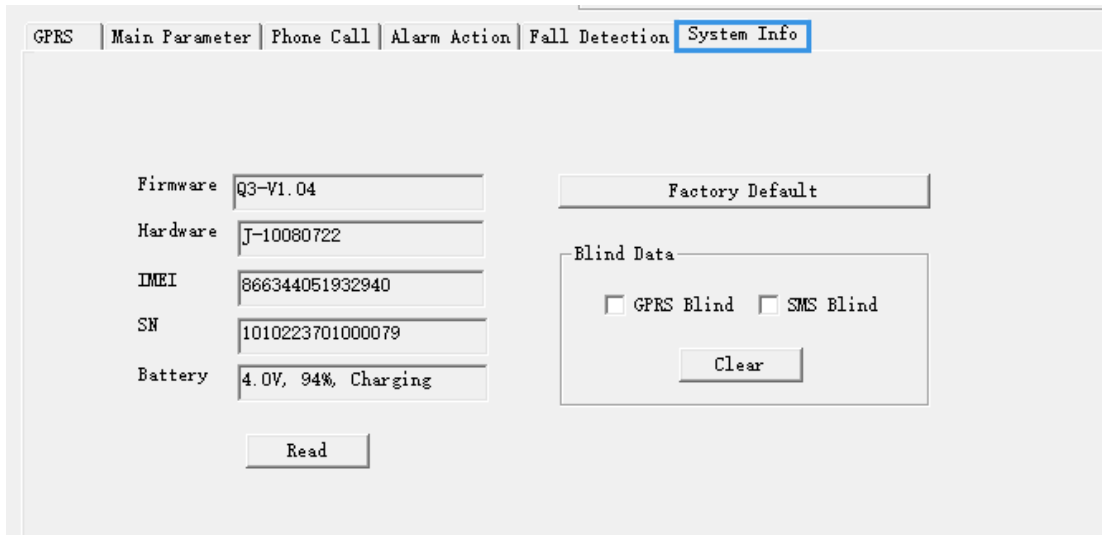
	down alarm in the device, unit is second, range [0,1000]. During this Alarm Delay stage, the device will ring for reminder that a fall down alarm is going to send out, the user can short press the SOS button to cancel the fall down alarm. If the user enabled the “Reset-on-Motion” option, shake the device or keep moving also can cancel the fall down alarm.
Accl Level	The sensitivity to adjust the fall down detection accuracy. Default is 55, range [20,60], higher value higher sensitivity.

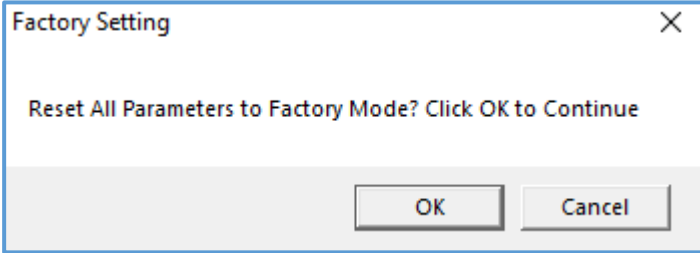
Tilt Settings	
Enable	Enable/Disable the tilt detection
Reset-on-Motion	Enable to cancel the Tilt alarm automatically by movement during “pre-alarm” and “Alarm delay” stages.
Angle Change	Threshold value to detect the Tilt Alarm, default is 30, unit is degree, range [0,90].
Pre-alarm	Configure duration time as pre-alarm stage before generating a Tilt alarm in the device, unit is second, range [0,1000]. During this pre-alarm stage, the device will ring for reminder that a Tilt alarm is going to generate, the user can short press the SOS button to cancel the Tilt alarm. If the user enabled the “Reset-on-Motion” option, shake the device or keep moving also can cancel the Tilt alarm. If the user enabled the “Reset-on-Angle” option, the angle changed less than preset degree can cancel the Tilt alarm too.
Alarm Delay	Configure duration time as Alarm Delay stage before sending a Tilt alarm in the device, unit is second, range [0,1000]. During this Alarm Delay stage, the device will ring for reminder that a Tilt alarm is going to send out, the user can short press the SOS button to cancel the Tilt alarm. If the user enabled the “Reset-on-Motion” option, shake the device or keep moving also can cancel the Tilt alarm. If the user enabled the “Reset-on-Angle” option, the angle changed less than preset degree can cancel the Tilt alarm too.
Reset-on-Angle	The threshold value to cancel the Tilt alarm automatically by angle change during “pre-alarm” and “Alarm delay” stages. Unit is degree, range can't over the above third row “Angle Change” field degree.

No Movement Settings	
No movement #1	Threshold value for first No movement alarm detection. Unit is second.
Time period	24 hours format, for example 23:59. Support crossing the day. Eg: 22:00 to 07:00. Note the No movement alarm time zone is associated with the SMS time zone settings.
No movement #2	Threshold value for second No movement alarm detection. Unit is second.
Time period	24 hours format, for example 23:59. Support crossing the day. Eg:

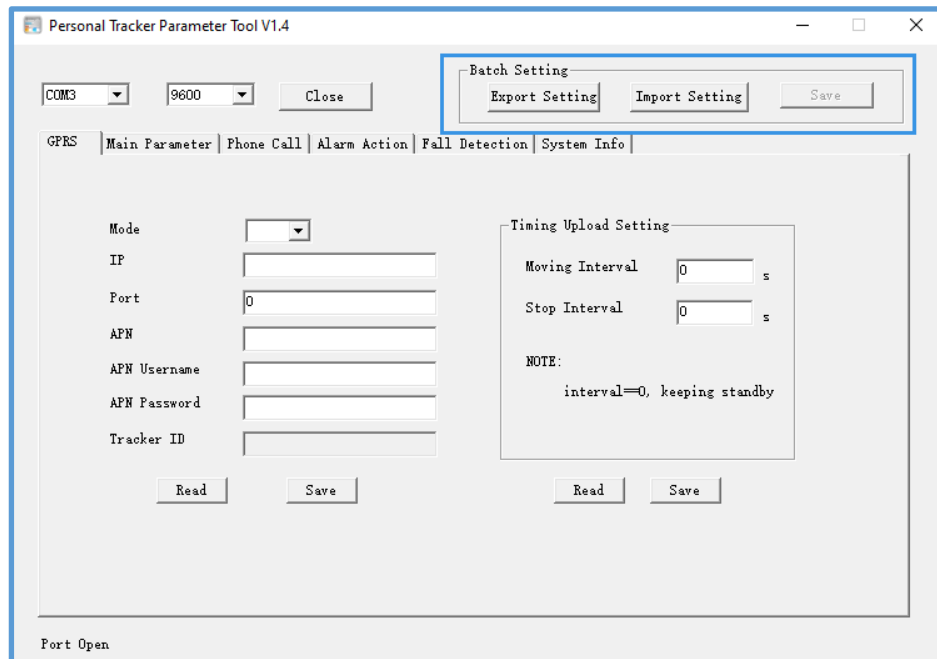
	22:00 to 07:00. Note the No movement alarm time zone is associated with the SMS time zone settings.
Sunday to Saturday option	Enable/Disable the No movement alarm active days. This field affects both #1 and #2 No movement alarm.

4.7 System Info



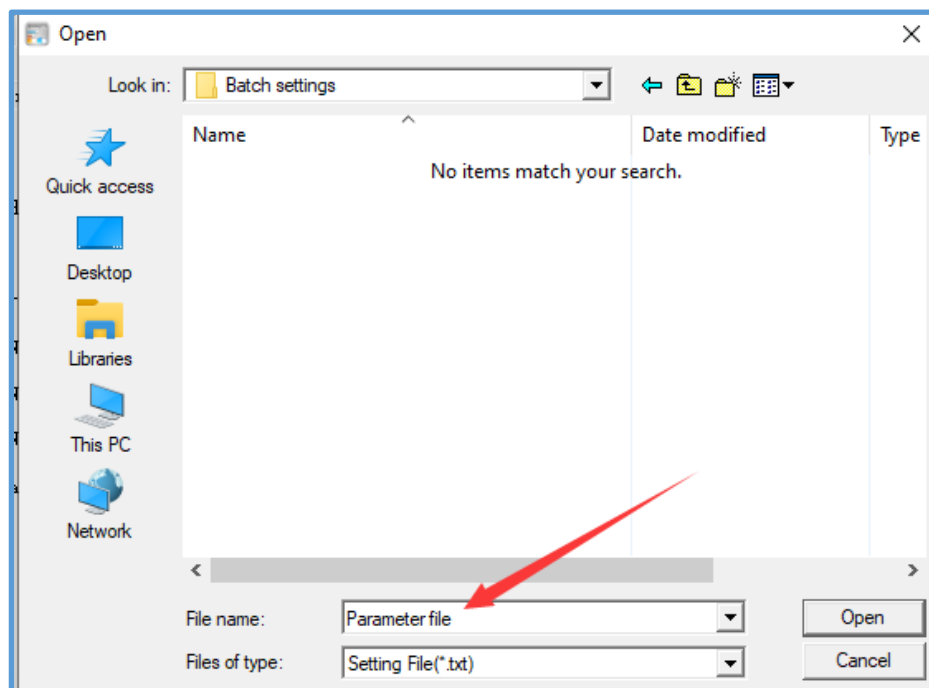
System Info	
Firmware	Model name and firmware version
Hardware	Hardware version
IMEI	IMEI number
SN	Serial number
Battery	Internal battery voltage, battery percent, recharging state
Factory Default	Back to factory default settings. 
Blind Data	
GPRS Blind	GPRS blind data, automatically stored in the device when the network is poor or No network.
SMS Blind	SMS blind data, automatically stored in the device when the network is poor or No network.
Clear	Option to clear GPRS stored data or SMS stored data, or clear both.

5 Batch Settings

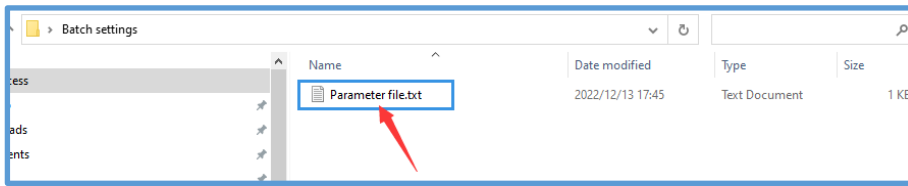


5.1 Export Setting

Export current device's all parameters and save it as txt file format for other same model devices import. Click the export setting button, write a file name for the export file. For example: "Parameter file".

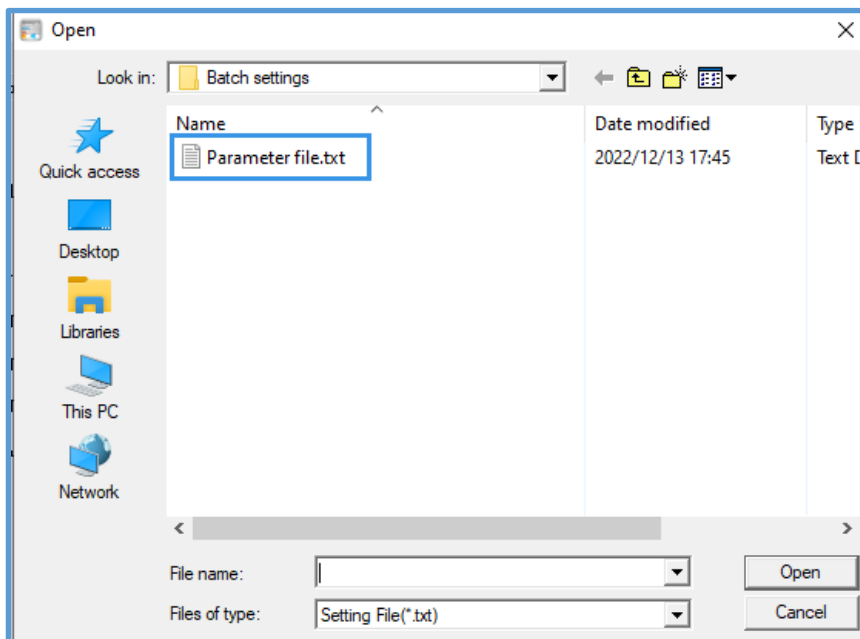


Now the parameter file is available for import

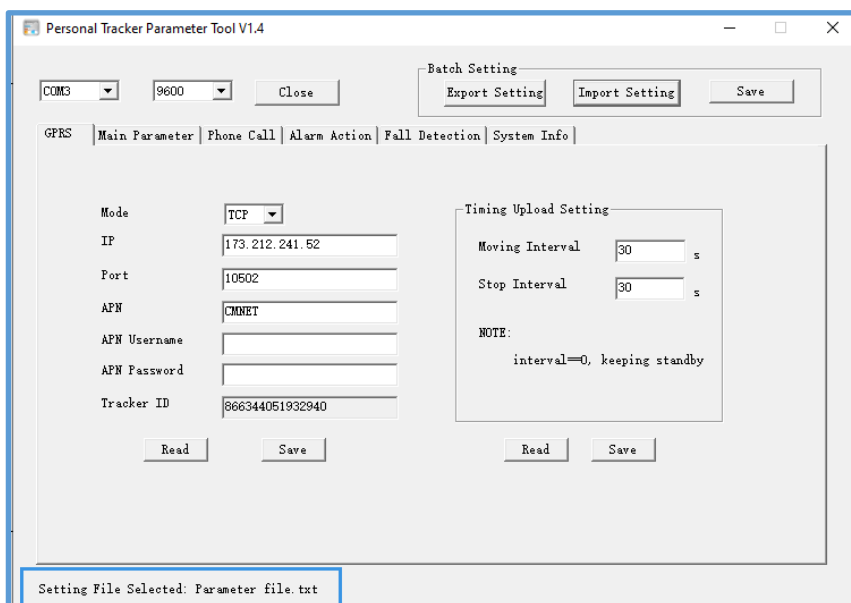


5.2 Import Setting

Click the “Import Setting” to choose the file for import. Left double clicks to select the file.

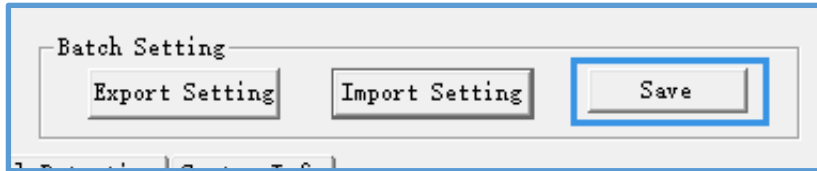


you can see the “setting file selected” with file name tips in the left corner

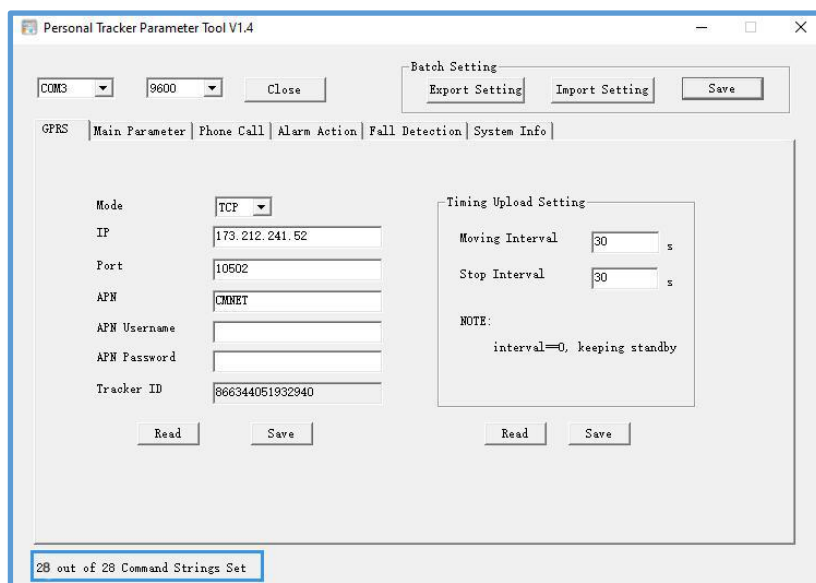


5.3 Save

Click the “Save” to save all parameters.



After click the “Save” button, you can see the “X out of X command strings set ” process tips in the left corner.



Please e-mail us at info@fifotrack.com if any question or feedback.