

fifotrack GPS Tracker

Personal GPS tracker | Vehicle GPS tracker | Fuel sensor



Personal

- **4G+3G** Personal GPS tracker **Q2**
- **4G+2G** Personal GPS tracker **Q3**
- Tuya smart **APP**

Vehicle

- **2G** Motorcycle and vehicle GPS tracker **S20**
- **2G** Motorcycle and vehicle GPS tracker **S30**
- **4G+2G** Motorcycle and vehicle GPS tracker **S70**
- **2G** Multi-function vehicle GPS tracker **A100**
- **2G** Advanced vehicle GPS tracker **A300**
- **3G** Advanced vehicle GPS tracker **A500**
- **4 RS232** ports vehicle GPS tracker **A600(2G)/A700(3G)**

PART 1: PRODUCTS



Q2

4G+3G Personal GPS Tracker



Q3

4G+2G Personal GPS Tracker



APP

Tuya Smart APP

4G Personal GPS Tracker Product Line with APP



S20

Basic 2G Vehicle GPS Tracker



S30

2G Vehicle GPS Tracker



S50

3G Vehicle GPS Tracker



AS10

Capacitive Fuel Sensor
with 7 meters cable



TUB01

Ultrasonic Fuel Sensor



Camera

Waterproof/Non-waterproof Camera



S70

4G Vehicle GPS Tracker



A100

BOFAN protocol 2G Vehicle GPS Tracker



A300

Advanced 2G Vehicle GPS Tracker



RFID

RFID Reader
Driver/Student management



iButton

1-wire Protocol iButton Reader



Fingerprint

Fingerprint Scanner
Driver management



A500

Advanced 3G Vehicle GPS Tracker



A600

4 RS232 Ports 2G Vehicle GPS Tracker



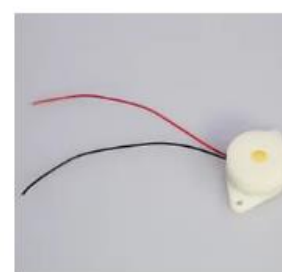
A700

4 RS232 Ports 3G Vehicle GPS Tracker



Temperature

Digital Temperature Sensor



Buzzer

Over speeding Buzzer



Liquid Sensor

Big storage tank monitoring

Vehicle GPS Tracker Product Line with Rich Accessories

4G+3G Personal GPS Tracker Q2

- SOS Button
- Two way call
- Fall down alarm
- Long battery life
- Waterproof IP67
- Lifetime Tuya APP
- 2 years warranty



Q2 Specification

Item	Specification	
Dimension	65*46*17mm	
Weight	48g	
GSM Module	SIMCOM7500, Cat 1 type	
GPS Module	ZKW AT6558R	
Charging Voltage	DC 5V/1A	
Internal Battery	1000mAh/3.7V Lithium ion battery	
Full charging time	<2 hours 10 minutes	
Power Consumption	Average 2.4mA standby current	
Working hours	Refer to chapter 6 for details	
Microphone	Built-in microphone	
Speaker	Built-in speaker	
Operating Temperature	-20°C~70°C	
Humidity	5%~95%	
Waterproof	IP67 (Testing condition: Immersed in 20cm depth water for 30 minutes)	
LED Light	2 LED lights indicate GPS/GSM/Power status	
Button/Switch	1 SOS button, 1 power button, 1 call button	
Flash Memory	4MB (Buffer storage: GPRS 8000 units, SMS 400 units)	
Motion Sensor	6-axis motion sensor (for Tilt/Man down/Fall down detection)	
Vibration motor	Built-in, vibration reminder incoming call/button press	
WiFi	802.11 n (2.4 GHz)	
Frequency Band	E version: for Asia, Europe, Middle East, Africa countries	2G GSM: 900/1800 MHz
		3G WCDMA: B1/B8 (2100/900MHz)
		4G FDD-LTE: B1/B3/B7/B8/B20
	SA version: for Latin America and Australia countries	2G GSM: Don't support
		3G WCDMA: B1/B5(2100/850MHz)
		4G FDD-LTE: B1/B3/B5/B7/B8/B28
	A version: for North America USA and Canada	2G GSM: Don't support
		3G WCDMA: B2/B5(1900/850MHz)
		4G FDD-LTE: B2/B4/B12
GPS Sensitivity	-167dBm	
GPS Start Speed	Cold start 30s Hot start 1s	
Position Accuracy	2.5m	
Charging Port	1 magnetic contact port for charging/configuring	
Charging Cradle	Available, standard packing accessory	

4G+2G Personal GPS Tracker Q3

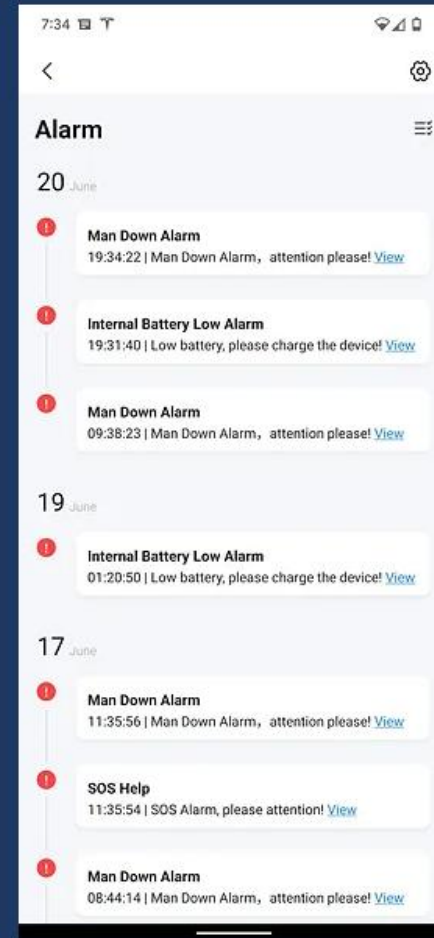
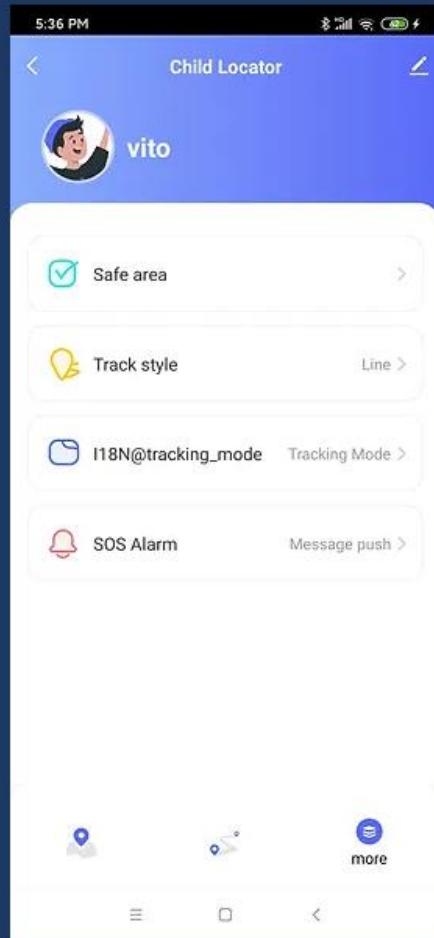
- SOS Button
- Two way call
- Fall down alarm
- Long battery life
- Waterproof IP67
- Lifetime Tuya APP
- 2 years warranty



Q3 Specification

Item	Specification	
Dimension	65*46*17mm	
Weight	48g	
GSM Module	Quectel EG915U, Cat 1 type	
GPS Chipset	ZKW AT6558R	
Charging Voltage	DC 5V/1A	
Internal Battery	1000mAh/3.7V Lithium-ion battery	
Full charging time	<2 hours 10 minutes	
Power Consumption	Average 2.4mA standby current	
Working hours	Refer to chapter 5 for details. 5 minutes time interval working for 4 days 20 hours	
Microphone	Built-in microphone	
Speaker	Built-in speaker	
Operating Temperature	-20°C~70°C	
Humidity	5%~95%	
Waterproof	IP67 (Testing condition: Immersed in 20cm depth water for 30 minutes)	
LED Light	2 LED lights indicate GPS/GSM/Power status	
Button/Switch	1 SOS button, 1 power button, 1 call button	
Flash Memory	4MB (Buffer storage: GPRS 8000 units, SMS 400 units)	
Motion Sensor	3-axis motion sensor (Fall down/Movement detection)	
Vibration motor	Built-in, vibration reminder incoming call/button press	
WiFi	2.4 GHz 802.11b (Rx)	
Bluetooth	BlueTooth Low Energy (BLE4.2 BR/EDR)	
Frequency Band	EU version: for Asia, Europe, Middle East, Africa, Australia countries	2G GSM: B2/B3/B5/B8
		4G FDD-LTE: B1/B3//B5/B7/B8/B20/B28
	LA version: for Latin America countries	2G GSM: B2/B3/B5/B8
		4G FDD-LTE: B2/B3/B4/B5/B7/B8/B28/B66
	USA and Canada	Don't support
GPS Sensitivity	-167dBm	
GPS Start Speed	Cold start 30s Hot start 1s	
Position Accuracy	2.5m	
Charging Cradle	Available, standard packing accessory	
Charging Port	1 magnetic contact port for Configuring/Upgrading/Debugging	

Tuya Smart APP



2G Motorcycle and vehicle GPS tracker S20

- Wide power input 8-92V
- Internal GPS/GSM antenna
- Waterproof IP66
- 2 input, 1 output, 1 AD
- Fuel monitoring
- Idling alarm
- Harsh braking
- Stop car remotely



S20 Specification

Item	Specification
Dimension	80*53*21mm
Weight	157g
GSM Module	SIMCOM800C
GPS Module	Quectel L70-R
Input Voltage	DC 8~92V/1.5A
Internal Battery	300mAh/3.7V
Power Consumption	30-35mA standby current
Internal Battery Life	2.4 hours at 30 seconds time interval 3.6 hours at 600 seconds time interval
Operating Temperature	-20°C~70°C
Humidity	5%~95%
LED Light	3 LED lights indicating GPS/GSM/External power status
Button/ Switch	1 power switch (inside case)
Flash Memory	8MB (GPRS data 20400 units, SMS data 320 units)
Sensor	3D Acceleration Sensor
GSM Frequency Band	GSM 850/900/1800/1900MHz
GPS Sensitivity	-161dBm
GPS Start Speed	Cold start 35s Hot start 1s
Position Accuracy	10m
I/O Port	2 Digital inputs – input1 is smart input, can be configured to negative or positive input, default is negative. Input2 is positive input for ACC. 1 Analog input, voltage range is 0-12V 1 Output 1 USB port (inside case)

2G Motorcycle and vehicle GPS tracker S30



- Wide power input 8-92V
- Internal GPS/GSM antenna
- Waterproof IP66
- 2 input, 1 output, 1 AD
- Fuel monitoring
- Support temperature sensor
- Support iButton
- Stop car remotely

S30 Specification

Item	Specification
Dimension	80*53*21mm
Weight	157g
GSM Module	SIMCOM800C
GPS Module	Quectel L70R
Input Voltage	DC 8~92V/1.5A
Internal Battery	300mAh/3.7V
Power Consumption	30-35mA standby current
Internal Battery Life	6 hours in sleep mode, and 2.5 hours in normal working mode.
Operating Temperature	-20°C~70°C
Humidity	5%~95%
LED Light	3 LED lights indicating GPS/GSM/External power status
Button/ Switch	1 power switch (inside case)
Flash Memory	8MB (GPRS data 20400 units, SMS data 320 units)
Sensor	3D Acceleration Sensor
GSM Frequency Band	GSM 850/900/1800/1900MHz
GPS Sensitivity	-161dBm
GPS Start Speed	Cold start 35s Hot start 1s
Position Accuracy	10m
I/O Port	2 Digital inputs – input1 is smart input, can be configured to negative or positive input, default is negative. Input2 is positive input for ACC. 1 Analog input, voltage range is 0-12V 1 Output 1 iButton 1 DC5V_OUT 1 USB port (inside case)

4G+2G Motorcycle and vehicle GPS tracker S70

- Wide power input 8-92V
- Internal GPS/GSM antenna
- Waterproof IP66
- 1 input, 1 output, 1 AD
- Fuel monitoring
- Idling alarm
- Harsh braking
- Stop car remotely



S70 Specification

Item	Specification
Dimension	80*53*21mm
Weight	162g
GSM Module	Quectel EG915U
GPS Module	Quectel L76K
Input Voltage	DC 8~92V/1.5A
Internal Battery	700mAh/3.7V
Power Consumption	7.8mA standby current 37~185mA at 10 seconds regular tracking mode (GPS signal available). Max 185mA at GPRS data transmitting moment.
Internal Battery Life	8 hours at every 30 seconds time interval 12.8 hours at every 300 seconds time interval
Operating Temperature	-20°C~70°C
Humidity	5%~95%
LED Light	3 LED lights indicating GPS/GSM/External power status
Button/ Switch	1 power switch (inside case)
Flash Memory	8MB (GPRS data 10200 units, SMS data 320 units)
GSM Frequency (2G)	850/900/1800/1900 MHz
UMTS Frequency (3G)	Don't support
FDD-LTE (4G)	B1/B3/B5/B7/B8/B20/B28
GPS Sensitivity	-165dBm
GPS Start Speed	Cold start 35s Hot start 1s
Position Accuracy	10m
I/O Port	1 Digital input, positive, default for ACC detection. 1 Analog input, voltage range is 0-36V, can be converted to input1 by command B18. Default is analog input. 1 Output 1 RS232 port for RFID/Camera/Ultrasonic fuel sensor/Fingerprint scanner (Optional) 1 USB port (inside case)

2G Multi-function vehicle GPS tracker A100

- Smart digital input
- Anti-Jamming
- Two-way communication
- Fuel monitoring
- Idling alarm
- Harsh braking
- Fatigue driving alarm
- Stop car remotely



A100 Specification

Item	Specification
Dimension	90*60*27mm
Weight	140g
GSM Module	SIMCOM800
GPS Module	U-blox7Q
Input Voltage	DC 11~36V/1.5A
Internal Battery	600mAh/3.7V
Power Consumption	30-35mA standby current
Internal Battery Life	100 hours in sleep mode, and 10 hours in normal working mode.
Operating Temperature	-20°C~70°C
Humidity	5%~95%
LED Light	3 LED lights indicating GPS/GSM/External power status
Button/ Switch	1 SOS Button, 1 power switch
Flash Memory	8MB (GPRS data 16000 units, SMS data 4000 units)
Sensor	3D Accelerator Sensor
GSM Frequency Band	GSM 850/900/1800/1900MHz
GPS Sensitivity	-161dBm
GPS Start Speed	Cold start 35s Hot start 1s
Position Accuracy	10m
I/O Port	3 Digital inputs - 1 negative input, 1 positive input, 1 custom input (Default positive input) 1 Analog input, voltage range is 0-12V 2 Output 1 Microphone port; 1 Speaker port; 1 USB port

2G Advanced vehicle GPS tracker A300

- Taking pictures by Camera
- Driver management by RFID
- Driver management by fingerprint
- Driver management by i-Button
- Temperature monitoring
- Ultrasonic fuel sensor
- Two-way communication
- Smart digital input
- 1 RS232



A300 specification

Item	Specification
Dimension	90*60*27mm
Weight	145g
GSM Module	SIMCOM800C
GPS Module	U-blox7Q
Input Voltage	DC 11~36V/1.5A
Internal Battery	600mAh/3.7V
Power Consumption	30-35mA standby current
Internal Battery Life	100 hours in sleep mode, and 10 hours in normal working mode.
Operating Temperature	-20°C~70°C
Humidity	5%~95%
LED Light	3 LED lights indicating GPS/GSM/External power status
Button/ Switch	1 SOS Button, 1 power switch
Flash Memory	8MB
Sensor	3D Accelerator Sensor
GSM Frequency Band	GSM 850/900/1800/1900MHz
GPS Sensitivity	-161dBm
GPS Start Speed	Cold start 35s Hot start 1s
Position Accuracy	10m
I/O Port	4 Digital inputs - 1 negative input, 1 positive input, 2 custom input (Default 1 positive input, 1 negative input) 2 Analog input, voltage range AD1 ~ 0~6V AD2 ~ 0~12V 2 Output 1 RS232 port (camera/RFID reader/two-way calling) 1-Wire protocol (Temperature sensor/i-Button) 1 Impulse detection (Default speedometer detection) 1 USB port

3G Advanced vehicle GPS tracker A500

- Taking pictures by Camera
- Driver management by RFID
- Driver management by fingerprint
- Driver management by i-Button
- Temperature monitoring
- Ultrasonic fuel sensor
- Two-way communication
- Smart digital input
- 1 RS232



A500 specification

Item	Specification
Dimension	90*60*27mm
Weight	145g
GSM Module	Quectel UC15
GSM Frequency	Refer to chapter 7.2
GPS Module	U-blox7Q
Input Voltage	DC 11~36V/1.5A
Internal Battery	600mAh/3.7V
Power Consumption	30-65mA standby current
Internal Battery Life	100 hours in sleep mode, and 10 hours in normal working mode.
Operating Temperature	-20°C~70°C
Humidity	5%~95%
LED Light	3LED lights indicating GPS/GSM/External power status
Button/ Switch	1SOS Button, 1 power switch
Flash Memory	8MB(GPSR data 20400 units, SMS data 300 units)
Sensor	3D Accelerator sensor
GPS Sensitivity	-161dBm
GPS Start Speed	Cold start 35s Hot start 1s
Position Accuracy	10m
I/O Port	4 digital input - 1 negative input, 1 positive input, 2 custom input (Default 1 positive input, 1 negative input) 2 analog input, voltage range: AD1 ~ 0~6V AD2 ~ 0~12V 2 output 1 RS232 port (camera/RFID reader/ultrasonic fuel sensor/fingerprint) 1-wire protocol (temperature sensor/i-Button) 1 Impulse detection (Default speedometer detection) 1 USB port

4 RS232 Ports vehicle GPS tracker A600(2G)

- Support 4 cameras
- Driver management by RFID
- Driver management by fingerprint
- Driver management by i-Button
- Temperature monitoring
- Ultrasonic fuel sensor
- Two-way communication
- Smart digital input
- 4 RS232 ports



A600 Specification

Item	Specification
Dimension	90*60*27mm
Weight	145g
GSM Module	SIMCOM800C
GPS Module	U-blox7Q
Input Voltage	DC 11~36V/2A
Internal Battery	600mAh/3.7V
Power Consumption	30-35mA standby current
Internal Battery Life	15 hours in sleep mode, and 6 hours in normal working mode.
Operating Temperature	-20°C~70°C
Humidity	5%~95%
LED Light	3 LED lights indicating GPS/GSM/External power status
Button/ Switch	1 SOS Button, 1 power switch
Flash Memory	8MB (GPSR data 20400 units, SMS data 300 units)
Sensor	3D Accelerator Sensor
GSM Frequency Band	GSM 850/900/1800/1900MHz
GPS Sensitivity	-161dBm
GPS Start Speed	Cold start 35s Hot start 1s
Position Accuracy	10m
I/O Port	4 Digital inputs - 1 negative input, 1 positive input, 2 custom input (Default 1 positive input, 1 negative input) 2 Analog input AD1: 0~6V AD2: 0~12V 2 Output 4 RS232 port (camera/RFID reader/ultrasonic fuel sensor/fingerprint/ two-way calling or other RS232 sensors) 1 RS485 port (reserved, 1 RS232 can be modified to 1 RS485) 1-Wire protocol (Temperature sensor/i-Button) 1 Impulse detection (Default speedometer detection) 1 USB port

4 RS232 Ports vehicle GPS tracker A700(3G)

- Support 4 cameras
- Driver management by RFID
- Driver management by fingerprint
- Driver management by i-Button
- Temperature monitoring
- Ultrasonic fuel sensor
- Two-way communication
- Smart digital input
- 4 RS232 ports



A700 Specification

Item	Specification
Dimension	90*60*27mm
Weight	145g
GSM Module	Quectel UC15
GPS Module	U-blox7Q
Input Voltage	DC 11~36V/2A
Internal Battery	600mAh/3.7V
Power Consumption	30-35mA standby current
Internal Battery Life	15 hours in sleep mode, and 6 hours in normal working mode.
Operating Temperature	-20°C~70°C
Humidity	5%~95%
LED Light	3 LED lights indicating GPS/GSM/External power status
Button/ Switch	1 SOS Button, 1 power switch
Flash Memory	8MB (GPSR data 20400 units, SMS data 300 units)
Sensor	3D Accelerator Sensor
GSM Frequency Band	Refer to chapter 7.2 below
GPS Sensitivity	-161dBm
GPS Start Speed	Cold start 35s Hot start 1s
Position Accuracy	10m
I/O Port	4 Digital inputs - 1 negative input, 1 positive input, 2 custom input (Default 1 positive input, 1 negative input) 2 Analog input AD1: 0~6V AD2: 0~12V 2 Output 4 RS232 port (camera/RFID reader/ultrasonic fuel sensor/fingerprint/ two-way calling or other RS232 sensors) 1 RS485 port (reserved, 1 RS232 can be modified to 1 RS485) 1-Wire protocol (Temperature sensor/i-Button) 1 Impulse detection (Default speedometer detection) 1 USB port

- AS10 Capacitive fuel sensor
- Ultrasonic fuel sensor TUB01
- Fingerprint scanner
- Camera
- Original fuel sensor
- Tracking platform



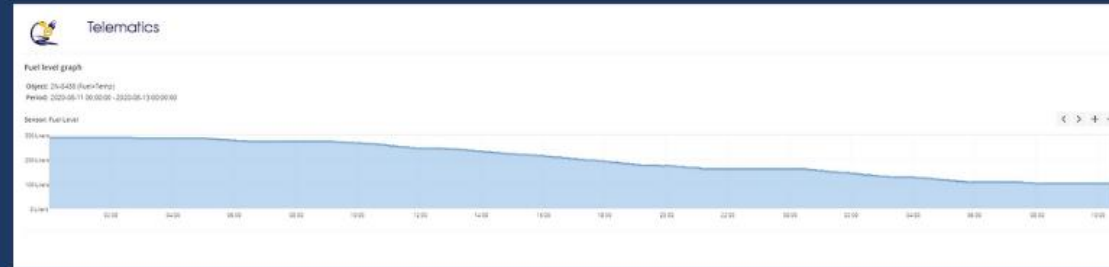
PART 2: MAIN ACCESSORIES

AS10 Capacitive fuel sensor



- Can be cut off freely
- With 7 meters cable
- 97-98% accuracy
- Durable and stable performance, over 8 years lifetime

Fuel Level Graph



Fuel Accuracy 97-98%

Fuel Filling Report VS Actual Filled Fuel

Fuel fillings

Object: 28-5818 (Fuel)

Period: 2020-03-01 00:00:00 - 2020-03-10 00:00:00

Time	Position	Before	After	Filled	Sensor
2020-03-04 19:54:41	20.550163°, 86.610048°	54.00 Liters	168.06 Liters	114.06 Liters	Fuel level
2020-03-05 19:07:57	20.140433°, 86.195740°	54.00 Liters	406.99 Liters	352.99 Liters	Fuel level

ALUNGBAH STATION

DEMO 09 426 056 501

Excavator No: 01471004

Data Time: 04-03-2020(19:55)

Pump No: 4/3

Product: Premium Diesel (10)

Price per liter: 318,343 x 870,000

Total: 100,000 MYR

Cash: 2K 5818

TATUNGAN STATION

DEMO 09 426 056 501

Excavator No: 0111281

Data Time: 05-03-2020(19:08)

Pump No: 4/3

Product: Premium Diesel (10)

Price per liter: 318,343 x 352,990

Total: 100,000 MYR

Cash: 2K 5818

Object: 96-4398 (Fuel)

Period: 2020-02-18 00:00:00 - 2020-02-29 00:00:00

Time	Position	Before	After	Filled	Sensor
2020-02-18 17:25:42	16.936043°, 86.087000°	300.00 Liters	360.00 Liters	60.00 Liters	Fuel level
2020-02-26 17:15:55	22.754390°, 97.624820°	376.72 Liters	231.66 Liters	145.06 Liters	Fuel level

Object: 110686 (Fuel)

Period: 2020-02-18 00:00:00 - 2020-02-29 00:00:00

Time	Position	Before	After	Filled	Sensor
2020-02-18 17:25:42	16.936043°, 86.087000°	300.00 Liters	360.00 Liters	60.00 Liters	Fuel level
2020-02-26 17:15:55	22.754390°, 97.624820°	376.72 Liters	231.66 Liters	145.06 Liters	Fuel level

Object: 110686 (Fuel)

Period: 2020-02-18 00:00:00 - 2020-02-29 00:00:00

Time	Position	Before	After	Filled	Sensor
2020-02-18 17:25:42	16.936043°, 86.087000°	300.00 Liters	360.00 Liters	60.00 Liters	Fuel level
2020-02-26 17:15:55	22.754390°, 97.624820°	376.72 Liters	231.66 Liters	145.06 Liters	Fuel level

Ultrasonic fuel sensor TUB01

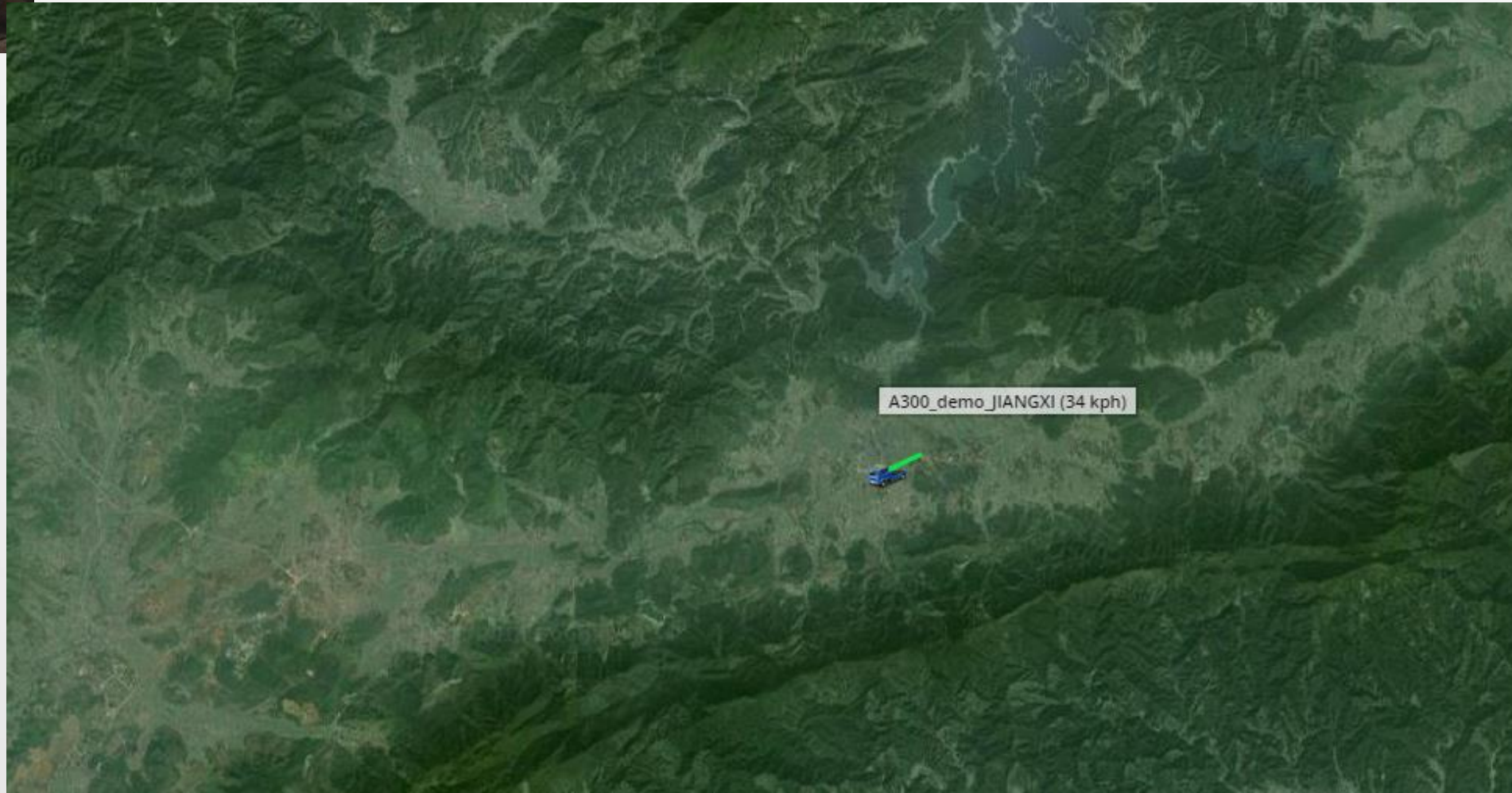


No need
drill a hole

- High precision, $\pm 1\%$
- Easy installation
- Stable performance
- No need drill a hole on oil tank

The testing demo is between mountains,
uphill and downhill often

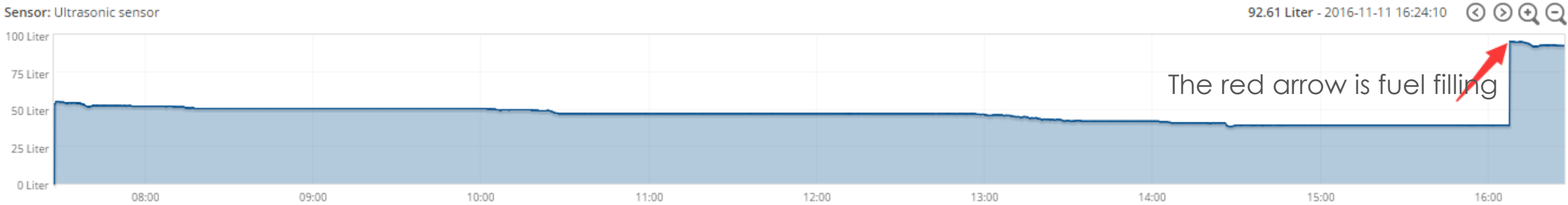
Fuel
level
graph is
stable



Fuel level graph

Object: Ultrasonic fuel_demo
Period: 2016-11-11 00:00:00 - 2016-11-11 23:00:00

Sensor: Ultrasonic sensor





Fingerprint Solution

- Driver management
- Identify drivers
- Control engine

Mode	Description	Next to do
Register fingerprint(s)		
"BI" twice	The first finger image is got	Lift finger for more than 2s, then put finger on device again, to get the second finger image
"BI" once	Fingerprint registration is successful	None
Normal using		
"BI" twice	Logout	None
"BI" once	Login	None

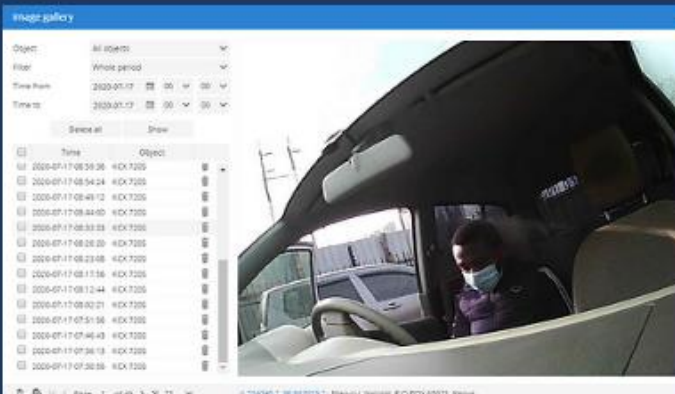
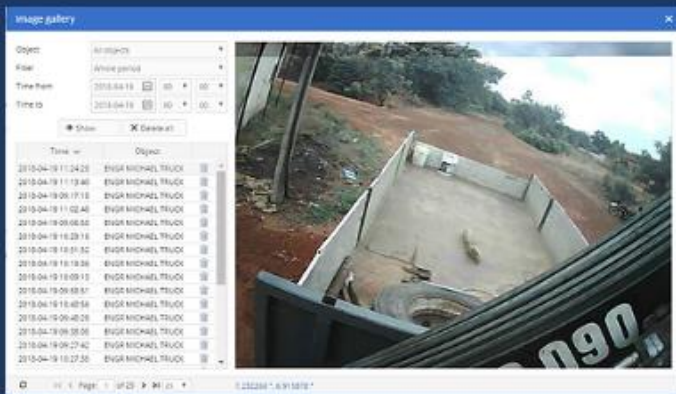
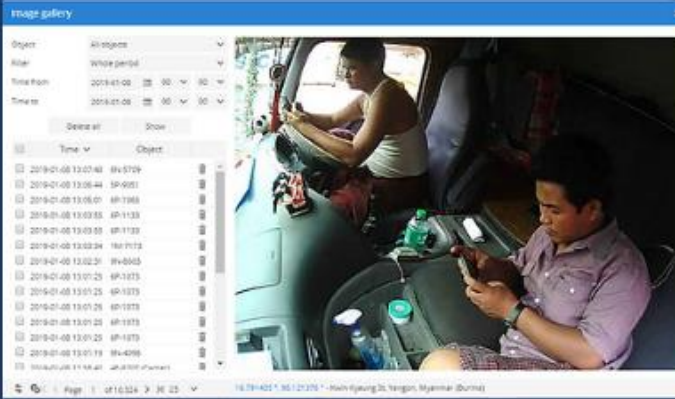
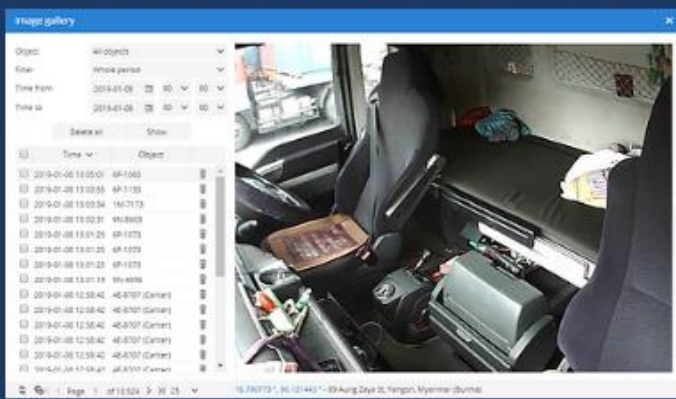
Camera



4 Camera
for bus
solution

- Resolution: 160*120, 320*240, 640*480
- Taking picture by command
- Taking picture by alarm event
- Taking picture by time interval

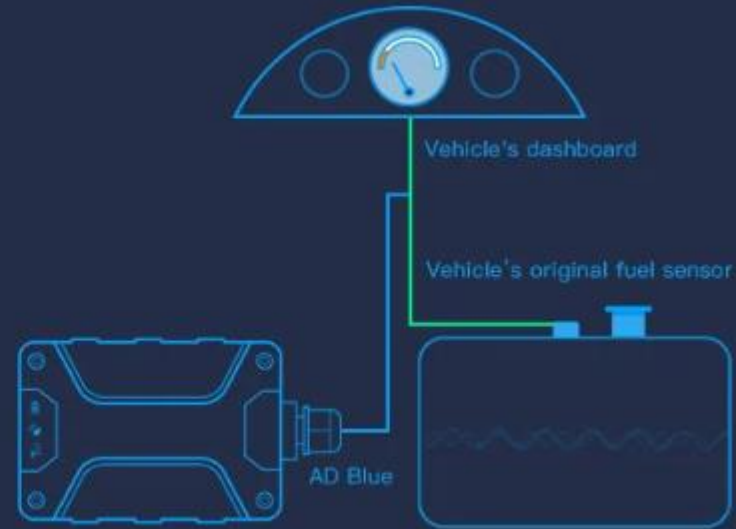
Image example



Original fuel sensor solution

Fuel Monitoring Based on Vehicle Original Fuel Sensor

- ✓ No need drill a hole
- ✓ Saving money, no need buy external fuel sensor
- ✓ Easy installation
- ✓ Keep fuel data under ignition off



Graph Messages

Fuel Level

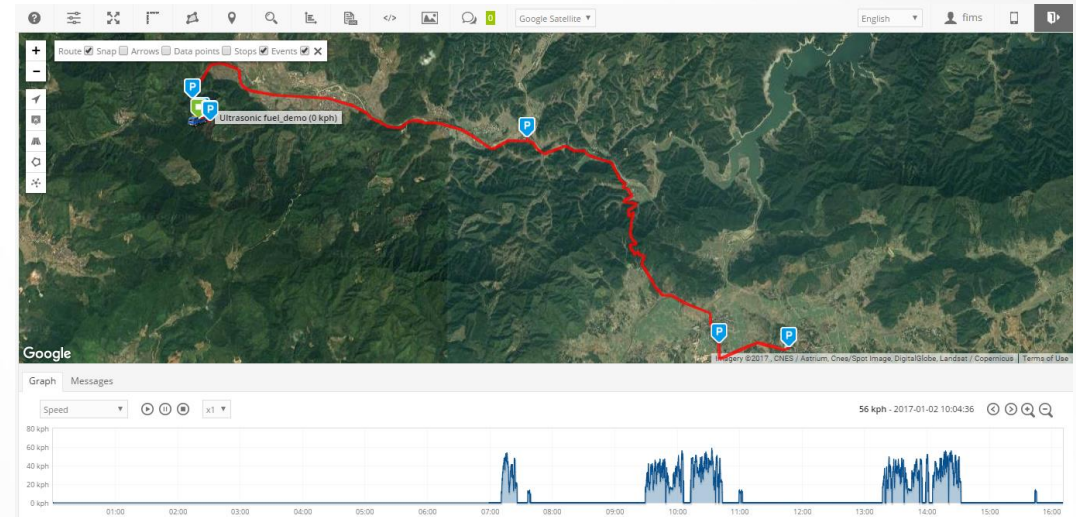
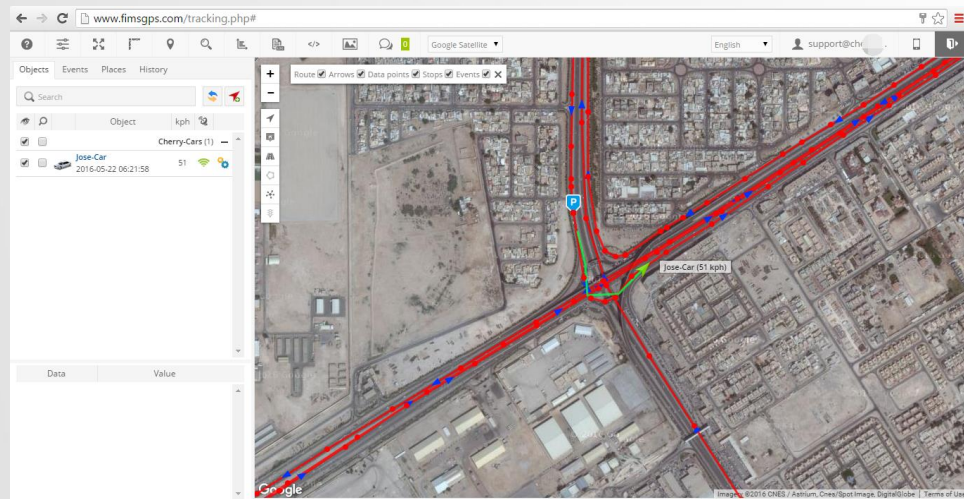


x1



FIMS Tracking Software





Tracking demo:

PC Login page : www.fmsggps.com

ID: fims

Password: 123456

Features

- Support user account and object management, features assigned by manager account.
- Domain re-branding
- E-mail alarms
- Route planning, smart polygon Geo-fence zone management with different colors
- Fuel monitoring with various fuel reports, including fuel filling, fuel theft, fuel level graph and cost.
- Temperature monitoring
- Driving behavior analysis reports such as speeding, fatigue, idling, parking and harsh braking alarms
- RFID and i-Button driver management, taking picture by camera
- Stop car remotely
- ACC on/off status alarms, door status alarms and so on
- Support multiple maps: Google, Open Street, multiple languages.

- Rich reports
- E-mail schedule
- Export reports
- Show address
- Template

Reports

+ New

Save

Generate

Report

Name

Fuel level

Type

Fuel level graph

Format

General information

Show addresses

General information (merged)

Zones instead of addresses

Object information

Stops

Drives and stops

Speed limit (kph)

Travel sheet

Time period

Events

Overspeeds

Underspeeds

Zone in/out

Service

Driver behavior (RAG)

Fuel fillings

Fuel thefts

Logic sensor information

Ignition (ACC) graph

Fuel level graph

Temperature graph

Sensor graph

Filter

To

Time from

20

Time to

20

Name

Fuel level

Type

Fuel level graph

Format

html

Objects

1

Zones

0

Schedule

×

Generate

Schedule

Daily

☒

Weekly

☐

Send to e-mail

cici.wu@fifotrack.com

Objects

Data items

Zones

Sensors

A100_demo_Shenzhen

A300-Rock

A300-cam-test

A300_demo_Shenzhen

A500-Test

A500-demo-Shenzhen

Q1-demo-Shenzhen

Ultrasonic fuel_demo

fifotrack-A100-BF

fifotrack-Q1-1160

Edit user

Account

Contact information

Sub accounts

Objects

Save

Login as user

User

Active

☒

Username

cici.wu@fifotrack.com

E-mail

cici.wu@fifotrack.com

Password

Enter new password

Expire account

☒

2017-09-03

Privileges

Manager

Manager

No manager

Objects (Account)

Objects (Manager)

Allow to add objects

No

Object limit

Date limit

Object limit

3

Other

History

Yes

Reports

Yes

RFID and iButton logbook

Yes

Object control

Yes

Image gallery

Yes

Chat

Yes

Use server SMS Gateway

Yes

Allow to clear history

Yes

Allow to edit objects

Yes

Max. number of markers

Max. number of routes

Max. number of zones

Allow to use API

No

C962C647463129E

Account
privilege
management

Features
privilege
management

Edit Object

Edit object

Main

Fuel consumption

Accuracy

Sensors

Service

Name

Car

IMEI

1111111111111111

Transport model

Honda NSX

VIN

Plate number

NSX123

Odometer (km)

GPS

222414

Engine hours (h)


ACC

0

Shown icon on map

Arrow

Icon



Tail color and points quantity

00FF44

7

Group

Ungrouped

Driver

IButton/Rfid

Trailer

No trailer

GPS device

SIM card number

Save

Cancel

Real-time tracking



Travel sheet

Travel sheet

Object: fifotrack_A100

Period: 2016-06-15 00:00:00 - 2016-06-23 00:00:00

Date	Position A	Position B	Length	Fuel consumption	Fuel cost
2016-06-15	22.652320 °, 113.999958 ° - Tao Xia Cun Yun Feng Lu, Baoan Qu, Shenzhen Shi, Guangdong Sheng, China	22.623403 °, 114.030870 ° - Mei Long Lu, Baoan Qu, Shenzhen Shi, Guangdong Sheng, China, 518131	5.55 km	0.00 liters	0.00 R
2016-06-15	22.623403 °, 114.030870 ° - Mei Long Lu, Baoan Qu, Shenzhen Shi, Guangdong Sheng, China, 518131	22.633290 °, 114.032466 ° - Ming Zhu Zhi Lu, LongHuaZhen, Baoan Qu, Shenzhen Shi, Guangdong Sheng, China, 518109	1.26 km	0.00 liters	0.00 R
2016-06-15	22.633290 °, 114.032466 ° - Ming Zhu Zhi Lu, LongHuaZhen, Baoan Qu, Shenzhen Shi, Guangdong Sheng, China, 518109	22.999646 °, 114.311608 ° - 148 Chen Jiang Da Dao Nan, Huicheng Qu, Huizhou Shi, Guangdong Sheng, China	67.39 km	0.00 liters	0.00 R
2016-06-15	22.999646 °, 114.311608 ° - 148 Chen Jiang Da Dao Nan, Huicheng Qu, Huizhou Shi, Guangdong Sheng, China	22.644170 °, 114.011110 ° - 562 13-588 He Ping Lu, Baoan Qu, Shenzhen Shi, Guangdong Sheng, China, 518109	69.88 km	0.00 liters	0.00 R
2016-06-15	22.644170 °, 114.011110 ° - 562 13-588 He Ping Lu, Baoan Qu, Shenzhen Shi, Guangdong Sheng, China, 518109	22.652166 °, 113.999773 ° - Tao Xia Cun Yun Feng Lu, Baoan Qu, Shenzhen Shi, Guangdong Sheng, China	2.04 km	0.00 liters	0.00 R
2016-06-16	22.652166 °, 113.999773 ° - Tao Xia Cun Yun Feng Lu, Baoan Qu, Shenzhen Shi, Guangdong Sheng, China	22.623721 °, 114.030620 ° - Min Xing Jie, Baoan Qu, Shenzhen Shi, Guangdong Sheng, China	5.77 km	0.00 liters	0.00 R
2016-06-16	22.623721 °, 114.030620 ° - Min Xing Jie, Baoan Qu, Shenzhen Shi, Guangdong Sheng, China	22.592613 °, 113.981353 ° - 2199 Li Shui Lu, Nanshan Qu, Shenzhen Shi, Guangdong Sheng, China, 518055	7.05 km	0.00 liters	0.00 R
2016-06-16	22.592613 °, 113.981353 ° - 2199 Li Shui Lu, Nanshan Qu, Shenzhen Shi, Guangdong Sheng, China, 518055	22.623701 °, 114.030688 ° - Min Xing Jie, Baoan Qu, Shenzhen Shi, Guangdong Sheng, China	7.34 km	0.00 liters	0.00 R
2016-06-16	22.623701 °, 114.030688 ° - Min Xing Jie, Baoan Qu, Shenzhen Shi, Guangdong Sheng, China	22.651948 °, 113.999808 ° - Tao Xia Cun Yun Feng Lu, Baoan Qu, Shenzhen Shi, Guangdong Sheng, China	5.69 km	0.00 liters	0.00 R
2016-06-17	22.651948 °, 113.999808 ° - Tao Xia Cun Yun Feng Lu, Baoan Qu, Shenzhen Shi, Guangdong Sheng, China	22.623393 °, 114.030678 ° - Mei Long Lu, Baoan Qu, Shenzhen Shi, Guangdong Sheng, China, 518131	5.98 km	0.00 liters	0.00 R

Driver behavior

Driver behavior (RAG)

Period: 2016-06-15 00:00:00 - 2016-06-23 00:00:00

Driver	Object	Route length	Overspeed duration	Overspeed score	Harsh acceleration count	Harsh acceleration score	Harsh braking count	Harsh braking score	Harsh cornering count	Harsh cornering score	RAG
Jhon Betancur	fifotrack_A100	388.19 km	6691 s	172.36	0	0.00	0	0.00	0	0.00	172.36

E-mail alarm



Wed 6/1/2016 11:27
GPS Tracking System <no_reply@admin.com>
fifotrack-Q1-1160 SOS alarm

收件人 kan.fan@fifotrack.com

已删除此邮件多余的换行符。

fifotrack-Q1-1160
SOS alarm
2016-06-01 11:25:14
1963 号-1977 Hua Fu Lu, HuaQiang Bei, Futian Qu, Shenzhen Shi, Guangdong Sheng, China, 518031 <http://maps.google.com/maps?q=22.546633,114.080703&t=m>

Regards

- [illegible]

CK

About fifotrack

- fifotrack means "first in first out, tracking the latest technology". Deeply rooted in the core values of integrity and quick action, fifotrack is a R&D-oriented company to meet users' individual demands in the Era of IoT.
- Set up by 3 cofounders who have averagely more than 10 years' experience in GPS tracker hardware, software and marketing fields.
- fifotrack has built a top team which enables us to provide full GPS tracking solution to our customers, including GPS tracker hardware design and manufacture, user -friendly FIMS tracking platform and professional sales technical support.



Our Core Values

- Integrity
- Never lose any existing customers

Our Vision:

Less staff, more professional
Less marketing, more on product
A reputable company

fifotrack

General Manager



Rock Zeng

- Rock Zeng is a senior GPS tracker hardware engineer for 13+ years.
- One of five pioneer hardware engineers who can design GPS tracker in China mainland. Reliable, goal oriented, strong motivation and great ambition.
- Jan 2014 - May 2015, Vice General Manager at BOFAN Limited, PT series products and R&D team management.
- Feb 2010 - Dec 2013, Hardware Manager at Meitrack Group, developed MVT/MT hot selling models.

R&D Manager



Vito Hu

- Vito Hu is a senior software engineer for 10+ years.
- Master of famous Hunan University. Effective working style, he is a devoted family man too.
- Nov 2013 - Aug 2015, R&D Manager at BOFAN Limited. PT series models sourcing code and maintaining, R&D team management, project manager.
- May 2011 - Oct 2013, Senior Software engineer at Meitrack Group, Sourcing code for Z1 model to meet China national standard project required by Ministry of Transport. Sourcing code for basic and advanced vehicle GPS tracker models too.

Factory Tour



SMT line

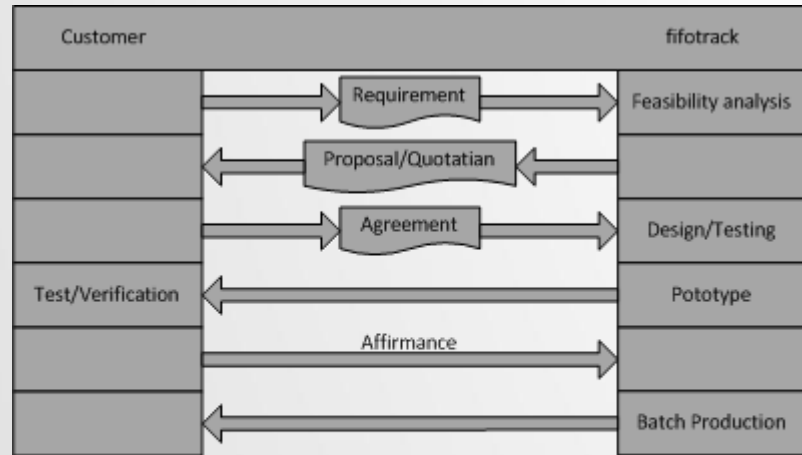


GPS Manufacturing Shop

1. Incoming Inspection	5. GPS Quality Control
2. SMT Quality Control	6. Packaging Quality Control
3. DIP Quality Control	7. Finished Goods Inspection
4. Semi-finished Products test	8. Outgoing Inspection

**Quality
Control
Process**

OEM/ODM Project



Legend:



1. Re-branding for case logo, color or packing box
2. Hardware modification
3. Firmware programming or customization
4. PCB layout
5. New product project development
6. Fast delivery and effective supply chain management
7. Smaller MOQ for OEM

Tracking platform partners



GPS Server

Address: A. Tumėno g. 4, LT-01109, Vilnius, Lithuania
E-mail: info@gps-server.net
Website: www.gps-server.net



GURTAM

Address: 79 Pritytskogo st., Minsk, 220140, Belarus
Tel: +375 293 293 294
E-mail: info@gurtam.com
Website: http://gurtam.com



uffizio

Address: A-27-29 Pramukh Sannidhya, Abrama, Dharampur Road, Valsad - 396001, Gujarat, INDIA
Tel: +91-2632-645492
E-mail: info@uffizio.in
Website: http://www.uffizio.in/



WHITELABEL TRACKING

Address: Columbus House, Cardiff, CF15 7NE, UK
Tel: +44 2920 003236
E-mail: sales@whitelabeltracking.com
Website: http://www.whitelabeltracking.com



3D tracking

Address: Le Grenier, Grand Marché Les Camps, St Martin Guernsey, GY4 6AA UK
Tel: +44 870 478 1225
E-mail: sales@3dtracking.com
Website: http://3dtracking.com/



Traccar

Address: 17, Bldg. 3, Apt. 166, Politehnicheskaya Street, Saint Petersburg 194021, Russian Federation
E-mail: sales@traccar.org
Website: https://www.traccar.org/



GpsGate

Address: Luntmakargatan 66, 3tr, Stockholm, Sweden
Tel: +46 8 612 50 70
E-mail: support@gpsgate.com
Website: http://gpsgate.com



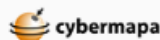
NAVIXY

Address: Khokhryakova street, 74, Block B, office 702, 620014, Russia
Tel: +7 495 223 0427
E-mail: sales@navixy.com
Website: http://www.navixy.com



GPSWOX

Address: 21 Crawford St. London, UK
E-mail: sales@gpswox.com
Website: https://www.gpswox.com/



cybermapa

Address: Av. Congreso 2595 Piso 2 Bs. As. - Argentina
Tel: +5411-3962-1200
E-mail: info@cybermapa.com
Website: http://www.cybermapa.com/



RedGps

Address: Giribone 909, Oficina 125, ezeiza CP: 1804, Buenos Aires, Argentina
Tel: +54 11 4295-8311
E-mail: contacto@redgps.com
Website: http://www.redgps.com/



Webtrack

Address: 0 Calle 16-45 Zona 15 Colonia el Maestro Ciudad de Guatemala
Tel: +502-123-456745
E-mail: info@webtrackgps.net
Website: http://www.webtrackgps.com

Certificate



Shenzhen fifotrack
Business License



fifotrack Hong Kong Branch
Business License



ISO9001:2015



CE certificate



SGS Certificate



fifotrack Trademark Certificate



S Series Model Design Patent



Air Transport Certificate



MSDS Report

Reviews

Customer code: IRMK
April 25, 2022
Ireland



I've completed the personal GPS tracker Q2 fall/man down alert detection tests on the new firmware and it is working as designed. I would have preferred if the angle detection and return to normal angle were more in-line with what I had described in my early emails but I can work with the method you have developed.

Customer code: MWBL
Mar 21, 2022
Myanmar



S20 is strong and proper dust proof, Its good, thats why i want to use ur device.

Customer code: BZTS1611
Mar 2, 2022
Belize



We really like the S50 units. They are very reliable and sturdy.

Customer code: TZAL
Nov 11, 2021
Tanzania



I have used your gps S20 for years, I know the quality of your products. I like your products. Your devices are so popular here in Tanzania. They are known by their good quality, strong and stable satellite signal, compact, durable but they are big. People trust your gps than any other manufacturer from China

Dec 24, 2021 feedback below about the fuel sensor

I have a very good feedback about your fuel level sensor. It is more accurate compared to other sensors. And on top of that, it is easy to make fuel calibration. Just two steps, Full and Empty calibration, no need for laptop calibration. This is of a great advantage over your competitors. Now if you can start thinking of wireless fuel level sensor, it will be nice.

Customer code: THLD
Jul 29, 2021
Thailand



We have observed those installed 1000 units S50 for over one year, the performance is very excellent, we are very satisfied with the stability of products

Customer code: NGMX
Jul 7, 2021
Nigeria



The good thing about the S20 is that it is very stable in performance for trucks & big buses

Contact us

Shenzhen fifotrack Solution Co.,Ltd

Tel: +86-755-23737869

Mobile/Whatsapp: +86 13420956673

E-mail: info@fifotrack.com

Website: www.fifotrack.com

Address: 303, Building 2, Dongyi Industrial Zone,
Shangtang, Longhua New District, Shenzhen City, China. 518131

Thank you for your time

first in, first out

www.fifotrack.com